

Our Mission, Your Company



- ▶ Spanaway Water Company strives to provide safe, reliable and high quality water for drinking and fire protection in an efficient, cost effective, professional and respectful manner.

Spanaway Water is a non-profit mutual water company owned by all the property owners (members) served by the Company. SWC serves over 10,000 families and more than 400 businesses in the Spanaway area. The Company's Board of Directors are elected from and by the Company members, therefore, you can be certain that both high water quality and reasonable prices are their top priorities.



P.O. Box 1000
18413 B. Street East
Spanaway, WA 98387
Phone: 253-531-9024
Fax: 253-539-9526
www.spanaway-water.org

Making your payments on time is important. Substantial time and effort is spent collecting late payments. The Company's directors have authorized a late fee of \$10.00 on an account when a delinquent notice is required and a \$50.00 fee is added when a service is disconnected for lack of payment. The Board of Directors sincerely wants to reduce the number of late and/or disconnected customers, while insuring that timely customers do not bear the cost of collecting on past due accounts.

In an effort to make the bill payment process as easy as possible we are offering many options for paying a bill.

- ◆ Mail,
- ◆ Night Drop box at the office,
- ◆ Bring it in the office, or to the drive-up window during business hours,
- ◆ Phoning in with a Credit Card Number during business hours, or
- ◆ Set up an Automatic Bill Payment
- ◆ Go to the Spanaway-water.org web site portal and follow the prompts.

Thank You for your timely payments.



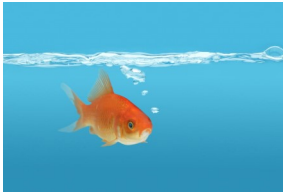
Spanaway Water Company 2026 Rates

Spanaway Water Company
spanaway-water.org

Tel: 253-531-9024

What are the fees for?

Bi-monthly billing for water service includes a minimum charge of \$35.79 per two month cycle.



To meet the Lead and Copper rule requirement, Spanaway Water is required to increase the water's pH level to reduce the water's slight corrosion of copper plumbing within some homes. We are required to add a disinfectant to assure safe drinking water. A \$11.94 EPA treatment charge is added to cover equipment, maintenance, and chemicals required for these mandated treatments.

A \$40.91 Capitol Projects Fee is also charged. This fee funds capital projects including as examples: main relocations required by County and State road improvements, existing well site improvements, i.e. manganese filtration, and security improvements under federal Homeland Security requirements.

These fees and the minimum charge result in a total bi-monthly base rate of \$88.64. To this base rate water use fees are added based on water volume consumed. The following presents the increasing block rates used to calculate the bill. Note that water use is billed in one hundred cubic foot (equal to 748 gallon) units called CCFs.

▶ Base Rate, EPA and Capital Fees, and Increasing Block Water Use Rates

Base Rate	\$35.79
EPA Treatment Charge	\$11.94
Capital Projects Fee	\$40.91
0-500 Cubic Feet-first block, each 100 cubic foot unit (CCF) billed at:	\$1.88/CCF
501-1,500 Cubic Feet-second block each 100 cubic foot unit billed at:	\$2.05/CCF
1,501-2,500 Cubic Feet-third block each 100 cubic foot unit billed at:	\$2.74/CCF
2,501-4,000 Cubic Feet-fourth block each 100 cubic foot unit billed at:	\$3.85/CCF
4,001-7,500 Cubic Feet-fifth block each 100 cubic foot unit billed at:	\$5.04/CCF
7,500 + Cubic Feet-overflow block each 100 cubic foot unit billed at:	\$5.98CCF

CCF = One Hundred Cubic Feet

1 Cubic foot = Approximately 7.5 gallons

100 Cubic feet = Approximately 748 Gallons

3,500 Cubic feet = Approximately 26,180 gallons

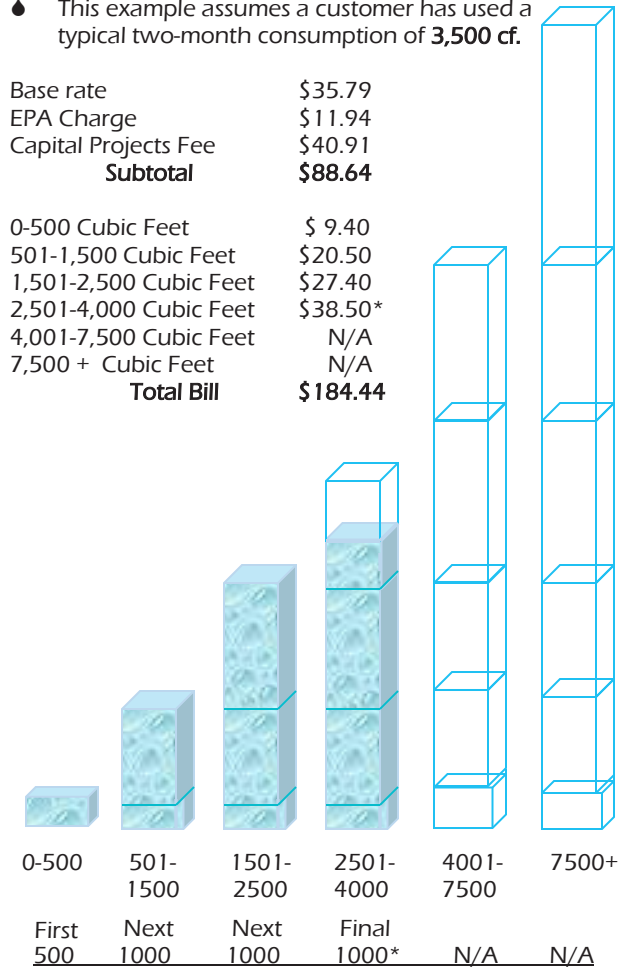
7,500 Cubic feet = Approximately 56,100 gallons

P.O. Box 1000
18413 B. Street East
Spanaway, WA 98387
Phone: 253-531-9024
Fax: 253-539-9526
www.spanaway-water.org

The following example shows how the above step rate is applied to a water bill.

◆ This example assumes a customer has used a typical two-month consumption of 3,500 cf.

Base rate	\$35.79
EPA Charge	\$11.94
Capital Projects Fee	\$40.91
Subtotal	\$88.64
0-500 Cubic Feet	\$ 9.40
501-1,500 Cubic Feet	\$20.50
1,501-2,500 Cubic Feet	\$27.40
2,501-4,000 Cubic Feet	\$38.50*
4,001-7,500 Cubic Feet	N/A
7,500 + Cubic Feet	N/A
Total Bill	\$184.44



Consumption Range	Rate per CCF	Number of CCFs	Total Charge
0-500	\$1.88	5	\$9.40
501-1500	\$2.05	10	\$20.50
1501-2500	\$2.74	10	\$27.40
2501-4000	\$3.85	10	\$38.50*
4001-7500	N/A	N/A	N/A
7500+	N/A	N/A	N/A
Total			\$184.44

Base Rate & Fees Total \$88.64 + \$95.80 for 3,500cf of water consumption = Total Bill of \$184.44

* 1,000 cubic feet at \$3.85/CCF